


GIANTS IN DANGER

SAVE OUR KAURI FORESTS!



HI, I'M TĀNE, THE KAURI! DID YOU KNOW THAT ONE OF OUR MOST PRECIOUS NATIVE TREES - THE KAURI - IS IN BIG TROUBLE?

To find out more, let's start **exploring** the wonderful world of these gigantic trees!

Write your name here, and let's begin...

FUN ACTIVITIES INSIDE 

KING OF THE FOREST

Kauri are one of the most amazing trees in the world - let's find out why...

Māori sometimes gave kauri names, such as Tāne Mahuta - who is Lord of the Forest. And no wonder! Kauri can grow to **60 metres high** and live for up to **2000 years!**

Kauri are considered to be taonga (treasures) and they grow in only one place in all the world - the northern part of New Zealand!

Tāne Mahuta, New Zealand's oldest living kauri, has been alive for around 2000 years. Use the timeline below to see how the world while he lived.



TODAY!

1500 AD

1000 AD

500 AD

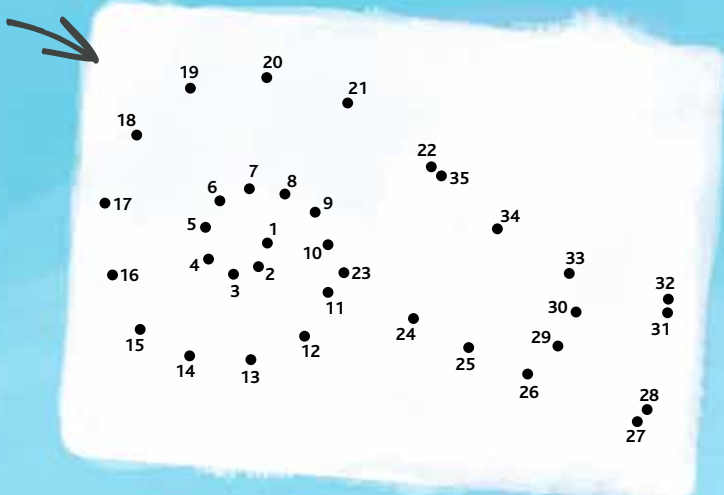
ABOUT ZERO AD

JOIN THE DOTS

These little creatures like to live in kauri forests... Join the dots to discover their name...

KAURI _ _ _ _ _

Also known as PUPURANGI in Māori!



MISSING IN ACTION!

Hidden in this **WORDFIND** are some of the animals that share the forest with kauri trees... Can you find them all?

Words are arranged up, down and diagonally.

- TĪRAIRAKA
- KĀKĀRIKI
- KŌKAKO
- KIWI
- MOKO
- TŪI
- KŪKUPA
- PŪPŪRANGI
- KĀREAREA
- KĀKĀ
- WETĀ

T	I	R	A	I	R	A	K	A	Q	K	H
Q	M	K	X	X	Z	Y	A	H	B	Y	K
K	O	K	A	K	O	A	K	Q	S	A	A
Y	K	B	Q	N	I	D	A	Z	D	X	R
A	O	A	V	S	J	W	R	W	A	V	E
P	X	W	K	G	T	F	I	S	Q	X	A
I	S	G	Q	A	R	Y	K	F	G	I	R
H	D	V	J	V	H	W	I	T	W	S	E
Z	N	S	Y	T	D	V	J	S	E	N	A
H	K	U	K	U	P	A	S	B	T	A	Q
K	X	Z	A	I	A	N	H	Y	A	Z	X
P	U	P	U	R	A	N	G	I	K	Q	H

Sometimes different Māori words are used in different areas of NZ. The words above are the names used in most of northern NZ (where kauri grow). *Kūkupa* means kererū or woodpigeon, *tīairaka* means fantail, *moko* means lizards and *karearea* is the name of the NZ falcon.

aland's biggest tree, has
000 years. Take a look at
ee what was happening in
e was growing up...

KAURI UNDER ATTACK

Our kauri forests aren't what
they used to be...

1969: People
walk on the
moon!

1840: Treaty
of Waitangi
signed.

1642:
Europeans
first spot NZ.

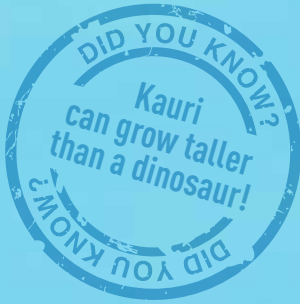
1400: Rangitoto
erupts.

900-1200:
Polynesian
explorers
arrive in NZ.

Not much
happens for a
thousand years.
It's a nice time
to be a tree.

181: Lake Taupo
erupts!
Most powerful
eruption in last
5000 years!

Tāne Mahuta is
a seed.



Humans have chopped down nearly all of the original kauri forest -
and now kauri face a new danger called **kauri dieback!**

Kauri dieback is a disease caused by tiny **spores** in the soil that attack
the **roots** and **trunk** of kauri so that they starve to death!

Hundreds of kauri have been killed by this **disease** in the last few
years, so it's very important we protect the few kauri we have left!

WHAT CAN YOU DO?



We need to stop the spread of
kauri dieback! Next time you
visit a park, do you think you
should...

STAY ON THE TRACK



OR

GO EXPLORING

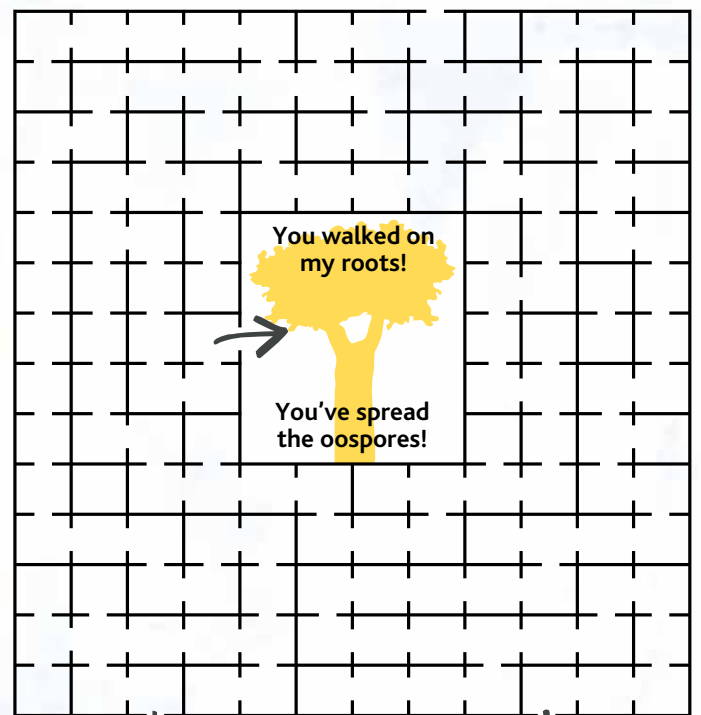


TICK THE CORRECT BOX

Answer: Stay on the track, that
way you're less likely to spread
spores around! And clean your boots
between areas of kauri so you don't
spread the disease as you walk...

The important thing to remember is to **CLEAN YOUR
SHOES** and **STICK TO THE TRACK** when you're in areas
with kauri! Let's practice through this **PARKS MAZE**...

ENTER PARK



Oh no! You've left the
park with dirty boots
and spread the spores!

Success! You've left the
park and cleaned your
boots. No oospores on
you!

EXTRA FOR EXPERTS

Here are some extra activities you can do...



HOLLER OUT!

The more people who know about **kauri dieback** the better! Tell your friends, or let people know at school...



REDUCE, REUSE, RECYCLE!

Everything we use comes from nature. You can **help trees** and nature by using less and recycling what you do use...



PLANT A NATIVE TREE!

Help your family find a good spot for a new tree. **Choose a tree** that grows well in your area and then help to plant and water it.



If you're out at a park see if you can find a **kauri**, or look up "kauri leaf" or "male and female kauri cones" on the internet and draw what they look like here:



AND DON'T FORGET,
IF YOU'RE VISITING
A PARK WITH KAURI
IN IT...



1 C _ _ _ _
YOUR
BOOTS AND
GEAR!



2 STAY ON THE
T _ _ _ _
AND OFF
KAURI ROOTS

For more information see www.kauridieback.co.nz or phone the Kauri Dieback Hotline on 0800 NZ KAURI (695 2874)

TĀNGATA WHENUA | MINISTRY OF PRIMARY INDUSTRIES | DEPARTMENT OF CONSERVATION
NORTHLAND REGIONAL COUNCIL | AUCKLAND COUNCIL | WAIKATO REGIONAL COUNCIL
BAY OF PLENTY REGIONAL COUNCIL

KEEP KAURI STANDING
STOP KAURI DIEBACK DISEASE SPREADING KIA TOITU HE KAURI

